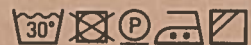


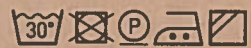
# VINCENT SHEPPARD



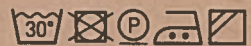
GENEVA GREY | CAT. B  
G0404 | 100% COTTON



GENEVA SILVERGREY | CAT. B  
G0303 | 100% COTTON



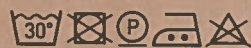
GENEVA MOON WHITE | CAT. B  
G0101 | 100% COTTON



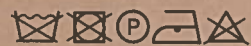
GENEVA SAND STONE | CAT. B  
G0202 | 100% COTTON



CALEIDO FLAX | CAT. B  
B0303 | 63% COTTON-37% LINEN



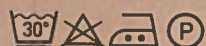
FACET FELT BLACK | CAT. C  
F0101 | 75% WOOL-25% PC



VALENCIA BLACK | CAT. B  
V0202 | VINYL-POLYESTER BACK



SIRA BLACK | CAT. A  
R0202 | 100% POLYESTER



SIRA WHITE | CAT. A  
R0707 | 100% POLYESTER



## INDOOR FABRICS

# VINCENT SHEPPARD



MINERAL BLUE  
CAT. B | S1010

SHINGLES  
CAT. B | S1111

CANVAS  
CAT. B | S0606

LIN  
CAT. B | S1212

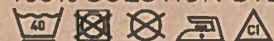
LONDON STONE  
CAT. B | S0808

DARK SMOKE  
CAT. B | S0909

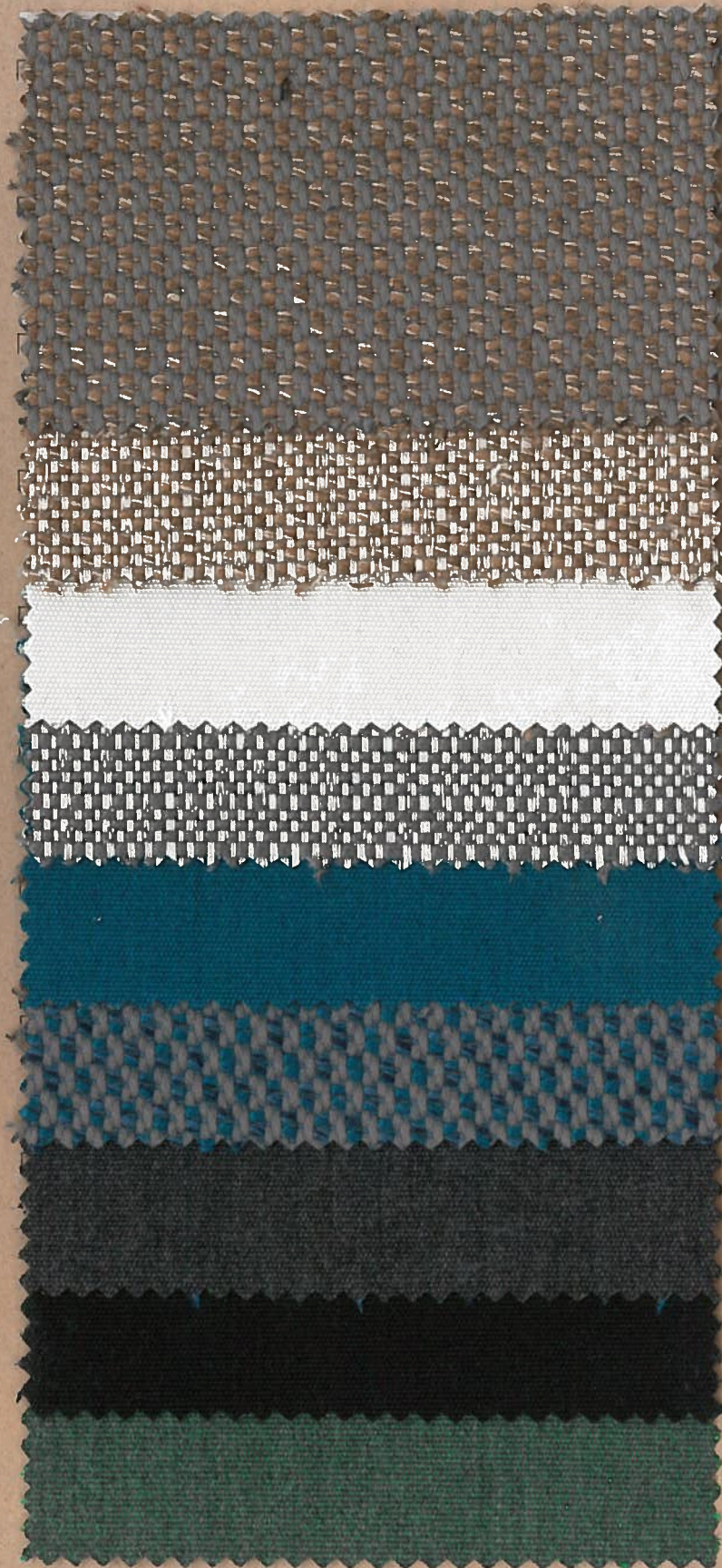
CLOUDY GREY  
CAT. B | S0505

IN-/OUTDOOR  
PERFORMANCE FABRICS

100% SOLUTION DYED ACRYLIC



# VINCENT SHEPPARD



LOPI COCONUT  
CAT. G | S2323

SAVANE COCONUT  
CAT. C | S2222

SUNBRELLA WHITE  
CAT. B | S2424

SAVANE ZINC  
CAT. C | S2121

CHARRON  
CAT. B | S1616

LOPI STORM  
CAT. G | S1717

SOOTY  
CAT. B | S1818

SUNBRELLA BLACK  
CAT. B | S1515

FOREST GREEN  
CAT. B | D0101

IN-/OUTDOOR  
PERFORMANCE FABRICS

100% SOLUTION DYED ACRYLIC  
A set of five care icons: a temperature icon with '40', a crossed-out bleach icon, a crossed-out iron icon, a crossed-out dry clean icon, and a crossed-out tumble dry icon.

# VINCENT SHEPPARD



LIGHT BROWN  
ANILINE | L0101

DARK BROWN  
ANILINE | L0202

BLACK  
ANILINE | L0303

TAUPE  
PIGMENT DYED | L0606

LEATHER  
ANILINE | PIGMENT DYED